

USB-Multi I/O Cable

● Introduction

Thank you for purchasing USB- Multi I/O Cable. This unique cable adapter allows you to attach your computer to Serial port interface and parallel printer device through the USB port and get faster printing results.

The USB to Multi I/O Cable is your fast solution to utilize the peripheral with serial port and Parallel port in an easy-to-use environment such as plug-&-play and hot swap function. Serial Port support - This cable provides ideal connections to Modems, PDA, Digital Camera, Label printer or ISDN terminal adapters with over 1Mbps data transfer rate. Parallel Port support - allows your PC to print with parallel printer devices connected through the USB port. Just plug the USB connector of the cable into the USB port of your PC, and the other end into the centronics connector of the standard parallel printer.

● Package Content

1. Hardware: USB- Multi I/O Cable
2. CD Driver
3. User's Manual

● Product Features

1. USB specification revision 1.1 compliant
2. USB Printer Class Specification 1.0 compliant
3. USB full speed (12Mbps) with bus powered
4. True Bi-directional parallel communication

● System Requirements

1. IBM PC 486DX4-100 MHz CPU or higher or compatible system
2. Available USB port
3. CD-ROM / DVD-ROM drive installed.
4. Windows 98SE / ME / 2000 / XP / 64bit-system and Vista

● Driver Installation

Before installing driver please choose the proper driver path according to your Windows OS.

Windows 98SE/ME : \USB to IO\UTM1925\Windows 2K&XP&2003\Win32\win98&me\

Windows 2000/XP : \USB to IO\UTM1925\Windows 2K&XP&2003\Win32\WIN2K&XP\

Windows XP-64bit : \USB to IO\UTM1925\Windows 2K&XP&2003\Win64\

Windows Vista32bit : \USB to IO\UTM1925\Windows Vista\Vista32

Windows Vista64bit : \USB to IO\UTM1925\Windows Vista\Vista32

● Driver Installation (Win98&ME)

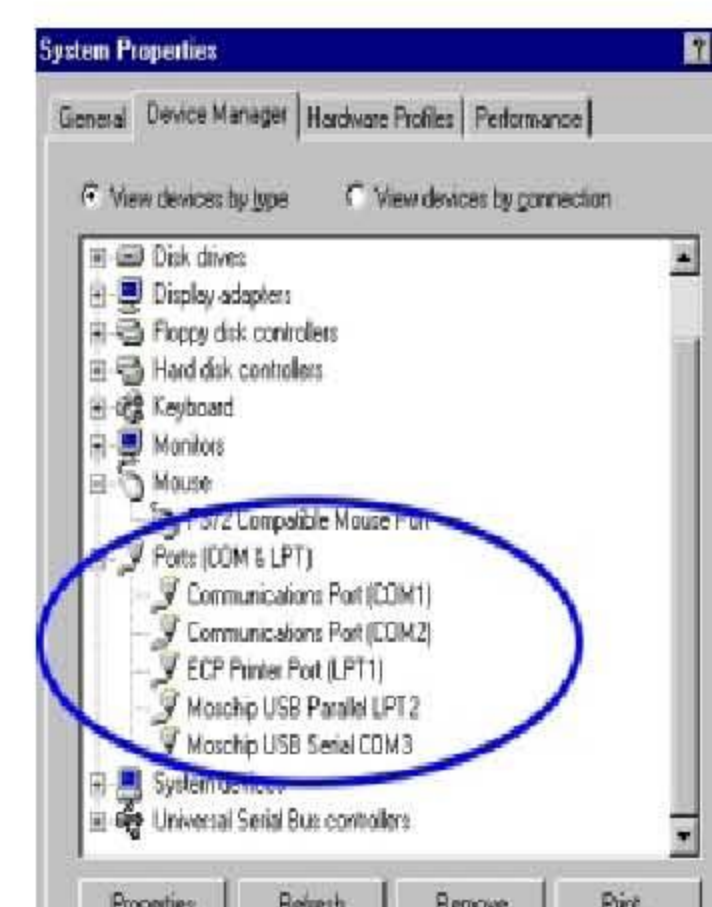
Follow the steps below on installing the USB to Multi-IO adapter for the first time:

1. Power on both computers where you will connect the USB to Multi-IO adapter and make sure that the USB port is enabled and working properly.
2. Plug in the USB cable into the USB port and Windows will detect an USB Device and run the **Add New Hardware Wizard** to assist you in setting up the new USB Composite Device.
3. Insert the Driver CD into the CD-ROM device and click **Next** to continue:
 - a. Select **Search for the best driver for your device** and click **Next**.

- b. Select **CD-ROM driver** or **Specify a location** and click **Browse**. Change the folder to your CD-ROM drive and click **OK**.

Path D:\USB to IO\UTM1925\Windows 2K&XP&2003\Win32\win98&me

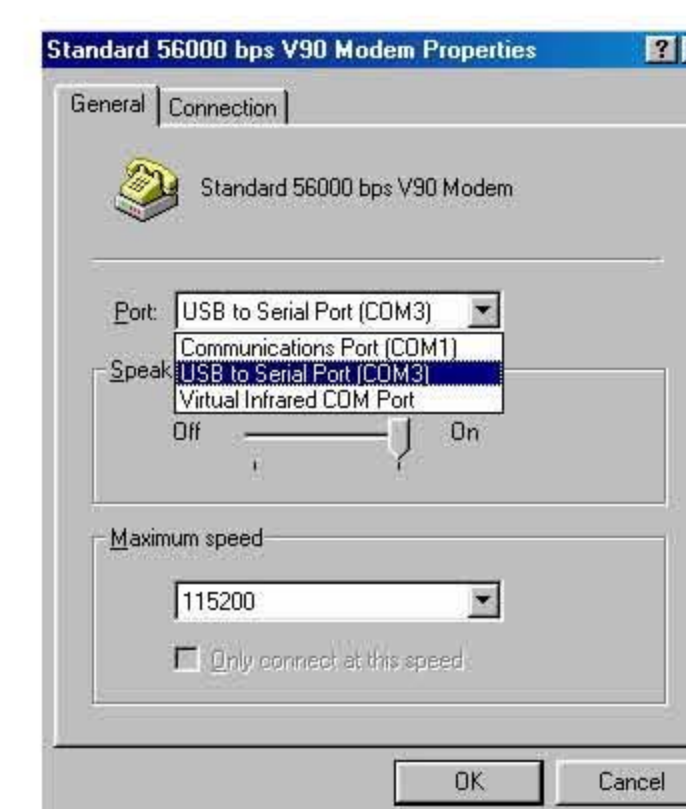
- c. Double check the directory that Windows prompts. Click **Next**.
- d. Windows will detect the driver and shows the USB to Multi-IO adapter. Click **NEXT** to continue until installation is complete.
- e. Click **Next** to continue and let Windows copy the needed files to your disk. Click **Finish** while installation is complete.
- f. After installing, the System will generate an additional COM Port, USB to Serial Port (COM3) for the connection to RS232 Serial Device.



● Setting up the RS-232 serial device (Win98SE)

Follow the steps below on how to connect your RS232 Serial Device (ie: Modem) to the USB port of your PC:

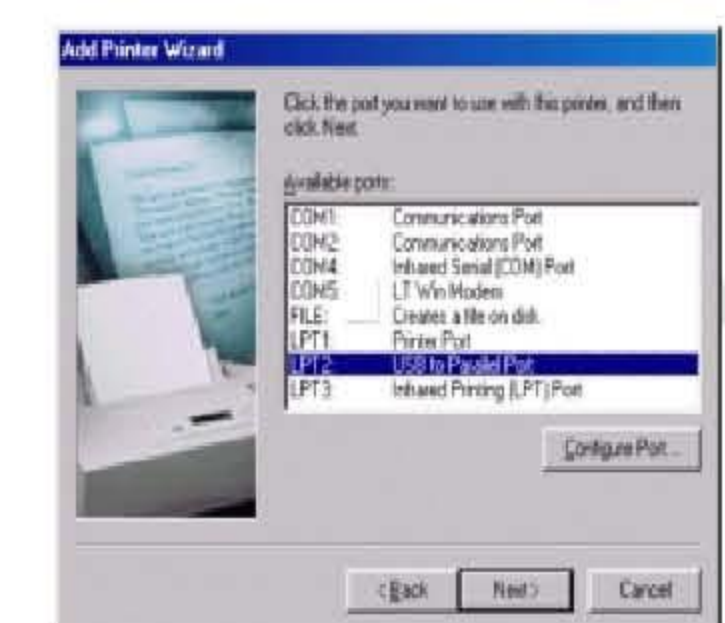
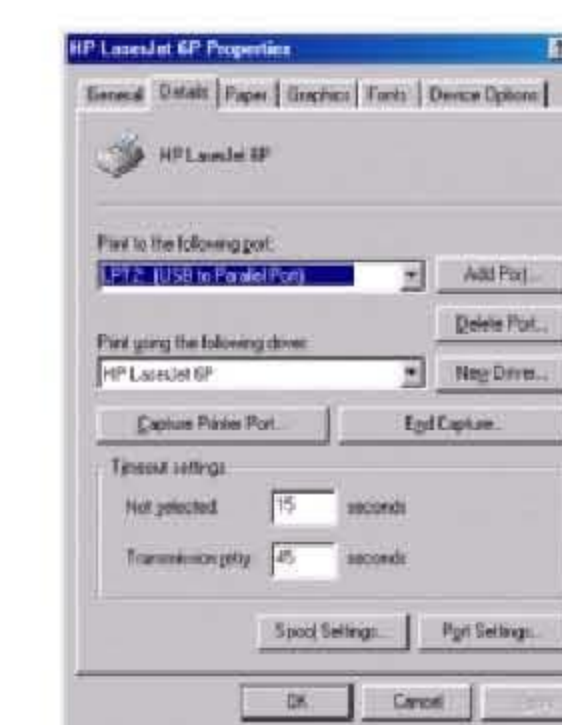
1. Turn off your Modem. Plug the D-Sub 9 connector of the USB to Serial Bridge Cable into your Modem. If you have a Serial cable connected to it, remove the cable and replace it with the USB to Serial Bridge Cable.
2. Turn on the Modem afterwards.
3. Turn on your computer and plug in the USB connector of the USB to Serial Bridge Cable into the USB port.
4. If you have already installed a Modem device before, click Start, Settings, Modems. Open Modems Properties, select the Modem, click Properties. In General tab, please change the Port value to **USB to Serial Port (COM3)**.
5. After finishing these processes, you can use USB to Serial Bridge Cable to connect RS232 Serial 56K FAX Modem and execute the Dial-up function to connect Internet, and send the FAX with the FAX software(ie: Microsoft FAX).



● Setting up the printer device (Win98SE)

Follow the steps below on how to connect your printer to the USB port of your PC:

1. Turn off your printer. Plug the centronics connector of the USB- Multi I/O cable into your printer.
 - * If you have a parallel cable which connected to it, remove the cable and replace it with the USB- Multi I/O cable. Turn on the printer afterwards.
2. Turn on your computer and plug in the USB connector of the USB- Multi I/O cable into the USB port.
3. If you have already installed a printer device before, click Start, Settings, Printers. Click right button of your mouse on the default installed printer and click on Properties. The Properties dialog box of the installed printer will appear on your screen.
4. Click the Details folder tab and change the printer port to **LPT2: (USB to 2222Parallel Port)**.
5. If you do not have a printer installed yet, click on Start, Settings, Printers, Add Printer. The **Add Printer Wizard** will start and assist you in installing a new printer device. Select the printer
6. Manufacturer and model name from the list provided by the wizard or use the printer driver diskette supplied with your printer.
7. When prompted which port the printer will use, click on **LPT2: (USB to Parallel Port)**.
8. Follow the succeeding instructions to complete the installation and also run **Print Test Page** to see if it can print without problems.



● Driver Installation (Win2000 / XP)

Follow the steps below to install driver of USB to Multi-IO adapter cable:

1. Power on your computer and make sure that the USB port is enabled and working properly.
2. Plug in the USB-Serial cable into the USB port and system will detect the device and you will see the **Found New Hardware Wizard**, please click cancel to next step



USB-Multi I/O Cable

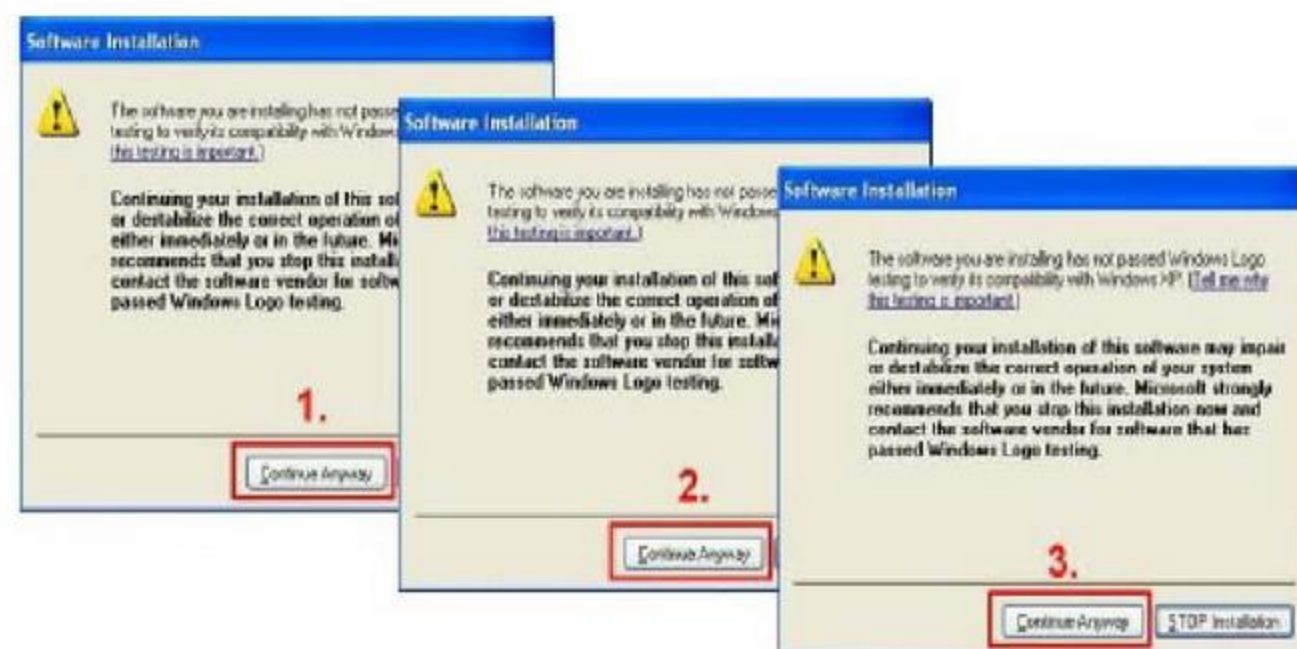
3. Please insert the Driver CD into the CD-ROM device. And Select **CD-ROM driver** and click Setup.exe file to install the driver.

The Driver Path **D:\USB to IO\UTM1925\Windows 2K&XP&2003\Win32\WIN2K&XP**

4. Click **Install**



5. Click three times for the **continue anyway** to install the driver.



6. Click **Exit** to finish install driver.



7. Plug in adapter now and follow the instructions of windows Hardware Installation Assistant

8. When Windows finished installing the software ,you have to check the Control -> Panel

-> System -> Hardware -> Device Manager--> Port will show it.



● Setting up the RS-232 serial device

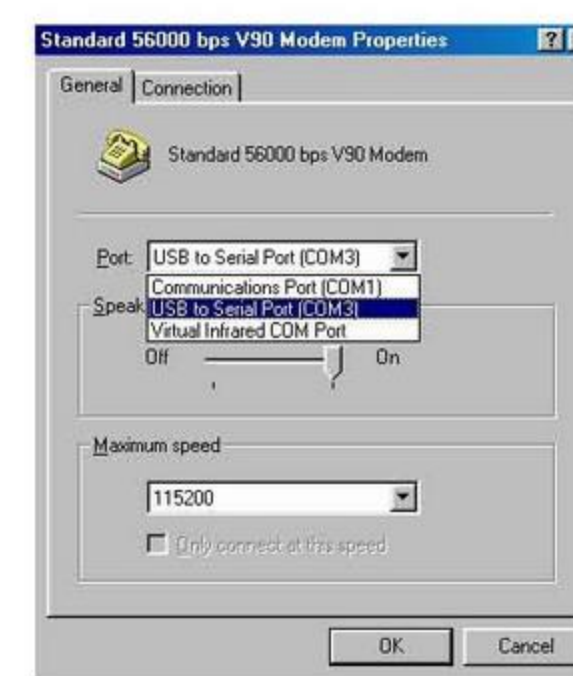
Follow the steps below on how to connect your RS232 Serial Device (ie: Modem) to the USB port of your PC:

1. Turn off your Modem. Plug the D-Sub 9 connector of the USB to Serial Bridge Cable into your Modem. If you have a Serial cable connected to it, remove the cable and replace it with the USB to Serial Bridge Cable.
2. Turn on the Modem afterwards.

3. Turn on your computer and plug in the USB connector of the USB to Serial Bridge Cable into the USB port.

4. If you have already installed a Modem device before, click Start, Settings, Modems. Open Modems Properties, select the Modem, click Properties. In General tab, please change the **Port** value to **USB to Serial Port (COM3)**.

5. After finishing these processes, you can use USB to Serial Bridge Cable to connect RS232 Serial 56K FAX Modem and execute the Dial-up function to connect Internet, and send the FAX with the FAX software(ie: Microsoft FAX).



● Setting up the printer device

Follow the steps below on how to connect your printer to the USB port of your PC:

1. Turn off your printer. Plug the centronics connector of the USB-Parallel printer cable into your printer. If you have a parallel cable connected to it, remove the cable and replace it with the USB-Parallel printer cable.
2. Turn on the printer afterwards.
3. Turn on your computer and plug in the USB connector of the USB-Parallel printer cable into the USB port.
4. If you have already installed a printer device before, click Start, Settings, Printers. Click right button of your mouse on the printer and click on **PORTS** to select the **USB0**.

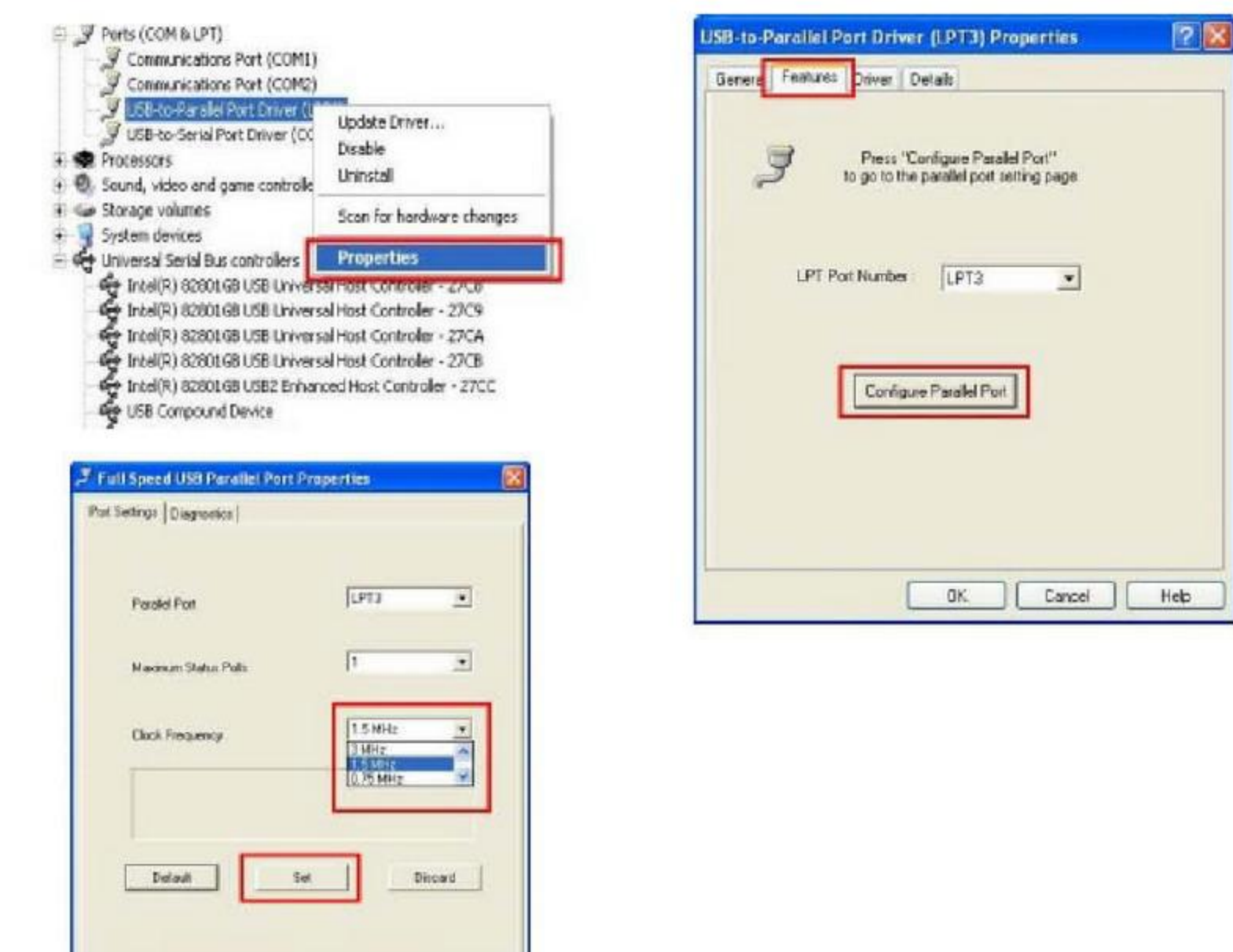


5. If you don't have a printer installed yet, click on Start, Settings, Printers, Add Printer. The **Add Printer Wizard** will start and assist you in installing a new printer device. Select the printer manufacturer and model name from the list provided by the wizard or use the printer driver diskette supplied with your printer.
6. When prompted which port the printer will use, click on **USB0**.
7. Follow the succeeding instructions to complete the installation and also run **Print Test Page** to see if it can print without problems.

● Q&A

Q. Printer does not print

1. Open the device manager in the control panel
2. Select connection of the converter (e.g USB Parallel Port (LPT3)) from Connections (COM und LPT) and open it with double click
3. Select Features and select **Configure Parallel Port**
4. Change **Clock Frequency** if the default clock frequency can't work properly. The frequency clock have 0.75MHz , 1.5MHz , 3MHz , 6MHz , 12MHz.
5. Select **Set**, close all windows and reboot your PC.



Note:

" Option for different clock frequencies is given in order to support different printers. This has to be checked with the printer in trial and error method to set the required frequency for it. Default settings support most of the available printers. "

Q. You may get printing errors or a freeze if you do not disable bi-directional printer features. How do I disable parallel printing?

1. Click Start...Click Settings...Double Click on Printers...Locate the printer in the list.
2. Right Click on this printer and go into properties.
3. Once you are in properties go to the Details box.
4. The above port should say LPT2USB1 and the name of the printer beside it.
5. At the bottom of the above box Click on Spool Settings and disable Bi-directional mode.
6. Test.

* If the printer still is unable to print please contact the printer manufacture and request any updated drivers for this printer and USB.

Q. Will this USB to Parallel Converter work with my multifunction printer?
No, USB to Parallel currently supports uni-directional printing only.

Note: All other parallel devices such as scanners, tape drives and zip drives aren't supported.